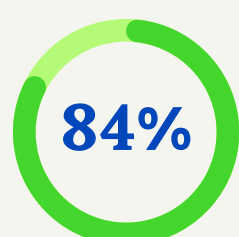


## NCACE Arts Professional Survey – Snapshot Findings

The National Centre for Academic and Cultural Exchange (NCACE) aims to facilitate and support capacity for Knowledge Exchange and collaborations between Higher Education and the arts and cultural sector. with a particular focus on evidencing and showcasing the social, cultural, environmental, as well as economic, impacts of such activities.

Earlier this year, we developed a survey in partnership with Arts Professional - "Collaborations with Higher Education" - to capture important insights from the arts and cultural sector about collaborative activities and the values they bring. We received 546 responses, which are summarised below.



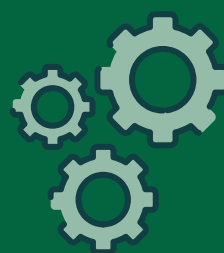
Over 80% of respondents had been involved with a HEI collaboration (73.99% once/ 10.26% more than once), while around 16% of respondents had not.

The cultural subsectors in which the most respondents primarily worked were *Across Multiple Arts Forms* (36.76%), *Performance and Theatre* (18.18%), *Visual Arts and Crafts* (14.62%) and *Music and Sound* (11.46%).

### Arts & cultural partners play various roles in the KE collaborations

These roles include:

- Co-design/production of the project (66.32%)
- Teaching or leading workshops for HEI students/staff (54.40%)
- Leading the collaboration project (46.11%)
- Using university resources and expertise (46.11%)
- University using their space/resources (31.09%)
- Providing data or information for a HEI research project (28.5%)



The nature of collaborations included but were not limited to:

research projects, student placements/internships, lectureships, artist in residence placements, exhibitions, performances, installations, mentoring and industry expertise, library access, technical expertise, facilities & equipment usage, PhD studentships, conferences and workshops.

### Respondents provided details on the opportunities and challenges of taking part in the collaborations with HEIs



Aspects which worked well included:

- Project management
- Relationship development and networking opportunities
- Skills and capacity building
- Inter-sector learning
- More awareness of funding opportunities
- Access to high quality research, equipment and facilities.

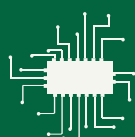


Aspects which worked less well included:

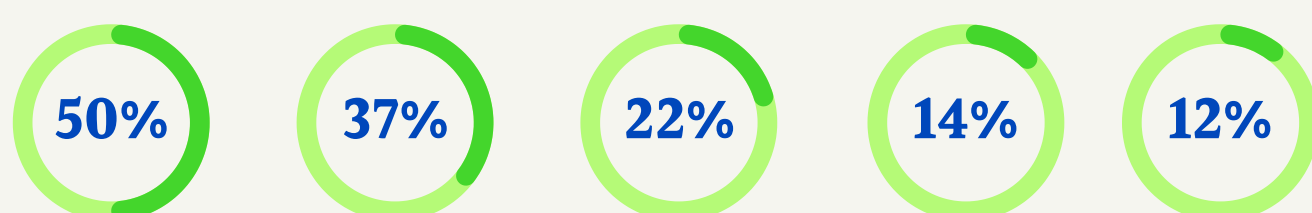
- Miscommunications between partners
- Difficulties with HEI administration and logistics
- Lack of time and capacity
- Translating academic language
- Some lack of understanding within HEIs about the cultural sector
- Limited financial opportunities
- Lack of diversity within the team.

In relation to the four core NCACE themes, respondents reported working on the following:

Place/Placemaking (64.75%)  
Health and Wellbeing (62.59%), Technology  
for Social Good (27.34%),  
Environment and Climate Crisis (23.74%)



## How were the collaborations likely to be funded?



HEI

Arts/Cultural Organisation

Trust or Foundation

Arts and Humanities Research Council

Local Authority

## Roughly, what was the value of the collaboration?



Number of responses

Less than £4999

£5000 - £9,999

£10,000 - £49,999

£50,000 - £99,999

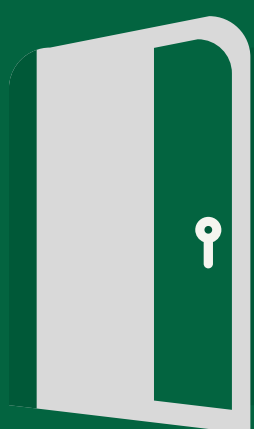
£100,000 - £499,999

£500,000 - £999,999

£1mil or more

Don't know or n/a

Value of funding



85% of respondents who had not previously been involved with a collaboration had considered working with a HEI.

For those respondents who had not considered collaborating with a HEI, 87.5% of respondents said this was because they were *unaware of opportunities*.

The barriers to collaborations for the arts/cultural sector included:

- Not knowing how to go about a collaboration (62.90%)
- A lack of time/staff (38.71%)
- Not being sure that the HEI had to offer (22.58%)
- Attempts halted by a lack of funding (12.90%)
- Universities not getting back in touch (12.90%)
- Initiators of the collaborations leaving (3.23%)

Almost three-quarters (73.33%) of respondents said they would be inclined to work with the HEI sector again in the future, with 18.89% of respondents saying that they probably would.

Only 5.56% of respondents stated that they would probably not be included to work with the HEI sector again, and 2.22% of respondents replied that they definitely would not be involved in a collaboration with a HEI.

**Thank you to everybody who responded to our survey. A full report of the findings will be released shortly.**